

PlantVisor Sistema

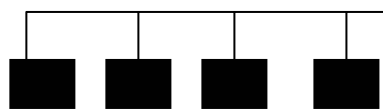
 **PlantWatch**

Pl@ntVisor

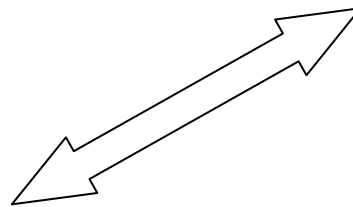
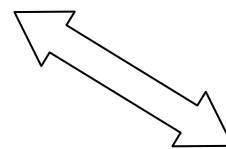
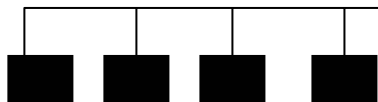
CAREL



Local
PlantVisor



PlantWatch



Remote
PlantVisor





 **PlantWatch**



Solutions for:

Data recording

HACCP

Printout

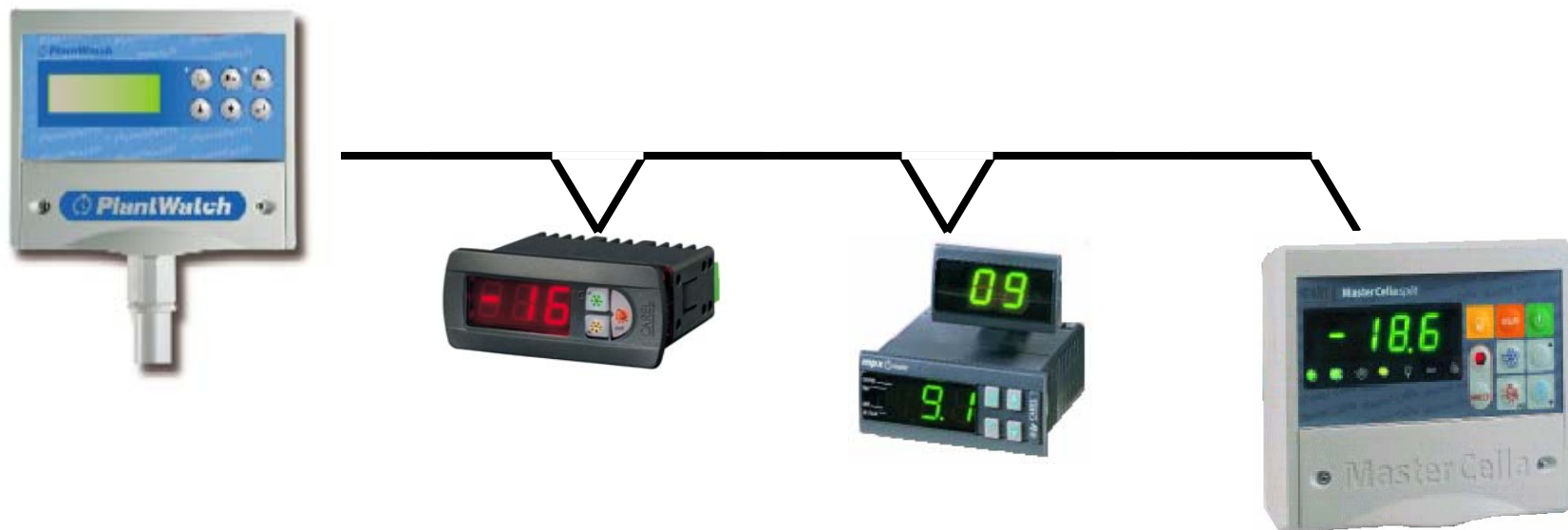
Alarm management

Tele Maintenance





Example of application - 1



This is the common use on small plants (cold-rooms, cabinets, etc.) equipped with Carel controllers.



 **PlantWatch**

 **Pl@ntVisor**

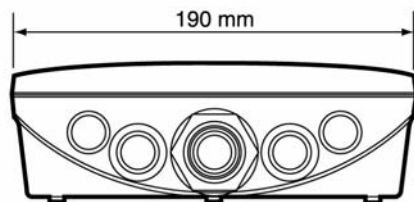
Example of application - 2



Small installations (cold-rooms, cabinets, etc.) without Carel controllers- Retrofit solutions



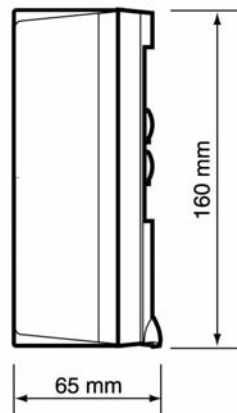
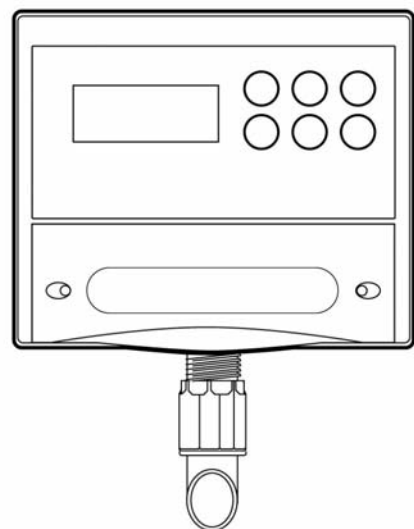
PlantWatch Info and Models



PLW00B0000

230 V

basic version



PLW00M0000

230 V

with internal MODEM (PSTN 33k6)

- Wall mounting, IP65 box
- Clear LCD display 4x20
- Embedded RS-485 (opto-insulated)
- Alarm relay, led, buzzer
- RS-232 to PC or MODEM (adapter)



 **PlantWatch**



PlantWatch Specifications



Up to 32 Carel units directly connectable
with full alarm management
Manages even CUSTOM APPLICATIONS
on pCO and pCO²

Flash memory
100 variables stored (Temperature,
pressure, digital I/O etc)
(average 2 weeks in full configurations)



Logs 4500 alarms/events



Text and display in 5 languages
(others are down-loadable)



 **PlantWatch**



PlantWatch: Product Plus

Easy & cheap :

- Without P.C.
- Without Windows Software
- Supervisory Software inside
- RS-485 embedded

Installation requires only

- Power Line and Carel RS-485 connection

More powerful with :

- PC connection
- Modem connection
- Printer & remote alarm module



PlantWatch



Opzioni: Moduli STAMPANTE



PLW0PPRT00 TABLE version
24 Vac (adapter)

PLW0PPRD00 24 Vac
DIN RAIL MOUNTING

Connected to the RS-485 Line
(up to 1 Km far from PlantWatch) :

- Allows on a Standard Parallel Printer
Alarm and Data Printout
- Remote Alarm Warning
- Security feature (Watch-Dog)





 **PlantWatch**



How to connect the printer





Option: PC – Modem connection

PLW0PPC000 KIT PW Manager

Cable + AC Adapter + Software

links PlantWatch to a COMPUTER.

Includes

Software PW Manager



PLW0PMD000 *Cable + 2 adapters (9 and 25 pins)*

links PlantWatch to a MODEM



15/09/2000 9:00 Nome impianto

Page: 1/2

15/09/2000 13:53 Nome impianto

11/09/2000 1: Banco BT Temperatura sonda

10/09/2000 1: Banco BT Temperatura sonda

	Lun	Mar	Mer	Giov	Ven	Sab	Dom
0	-21.7	-23.4	-20.3	-20.0	-19.4	-18.7	-18.7
1	-21.3	-21.1	-21.0	-20.7	-20.2	-20.0	-19.7
2	-20.0	-19.9	-19.9	-19.5	-19.7	-19.9	-19.1
3	-20.0	-20.1	-20.5	-20.7	-20.8	-21.0	-18.7
4	-21.3	-21.1	-21.0	-20.7	-20.2	-20.0	-18.9
5	-20.0	-19.9	-19.9	-19.5	-19.7	-19.9	-19.0
6	-20.0	-20.1	-20.5	-20.7	-20.8	-21.0	-19.1
7	-21.3	-21.1	-21.0	-20.7	-20.2	-20.0	-19.2
8	-20.0	-19.9	-19.9	-19.5	-19.7	-19.9	-19.3
9	-20.0	-19.9	-19.9	-19.5	-19.7	-19.9	-19.5
10	-20.0	-19.9	-19.9	-19.5	-19.7	-19.9	-19.7
11	-20.0	-19.9	-19.9	-19.5	-19.7	-19.9	-19.9
12	-20.0	-20.1	-20.5	-20.7	-20.8	-21.0	-20.0
13	-21.3	-21.1	-21.0	-20.7	-20.2	-20.0	-20.1
14	-20.0	-20.1	-20.5	-20.7	-20.8	-21.0	-19.9
15	-21.3	-21.1	-21.0	-20.7	-20.2	-20.0	-19.7
16	-20.0	-20.1	-20.5	-20.7	-20.8	-21.0	-19.1
17	-21.3	-21.1	-21.0	-20.7	-20.2	-20.0	-19.2
18	-20.0	-19.9	-19.9	-19.5	-19.7	-19.9	-19.3
19	-20.0	-19.9	-19.9	-19.5	-19.7	-19.9	-19.0
20	-20.0	-20.1	-20.5	-20.7	-20.8	-21.0	-19.7
21	-21.3	-21.1	-21.0	-20.7	-20.2	-20.0	-20.0
22	-20.0	-20.1	-20.5	-20.7	-20.8	-21.0	-20.5
23	-21.3	-21.1	-21.0	-20.7	-20.2	-20.0	-20.0

	0'	10'	20'	30'	40'	50'
0	----	----	----	----	----	*****
1	-21.3	-21.1	-21.0	-20.7	-20.2	-20.0
2	-20.0	-19.9	-19.9	-19.5	-19.7	-19.9
3	-20.0	-20.1	-20.5	-20.7	-20.8	-21.0
4	-21.3	-21.1	-21.0	-20.7	-20.2	-20.0
5	-20.0	-19.9	-19.9	-19.5	-19.7	-19.9
6	-20.0	-20.1	-20.5	-20.7	-20.8	-21.0
7	-21.3	-21.1	-21.0	-20.7	-20.2	-20.0
8	-20.0	-19.9	-19.9	-19.5	-19.7	-19.9
9	-20.0	-19.9	-19.9	-19.5	-19.7	-19.9
10	-20.0	-19.9	-19.9	-19.5	-19.7	-19.9
11	-20.0	-19.9	-19.9	-19.5	-19.7	-19.9
12	-20.0	-20.1	-20.5	-20.7	-20.8	-21.0
13	-21.3	-21.1	-21.0	-20.7	-20.2	-20.0
14	-20.0	-20.1	-20.5	-20.7	-20.8	-21.0
15	-21.3	-21.1	-21.0	-20.7	-20.2	-20.0
16	-20.0	-20.1	-20.5	-20.7	-20.8	-21.0
17	-21.3	-21.1	-21.0	-20.7	-20.2	-20.0
18	-20.0	-19.9	-19.9	-19.5	-19.7	-19.9
19	-20.0	-19.9	-19.9	-19.5	-19.7	-19.9
20	-20.0	-20.1	-20.5	-20.7	-20.8	-21.0
21	-21.3	-21.1	-21.0	-20.7	-20.2	-20.0
22	-20.0	-20.1	-20.5	-20.7	-20.8	-21.0
23	-21.3	-21.1	-21.0	-20.7	-20.2	-20.0

PRINTOUTS
examples

HACCP

11/09/2000 1: Banco surgelati Temperatura sonda

10/09/2000 2: Banco surgelati Temperatura sonda

	Lun	Mar	Mer	Giov	Ven	Sab	Dom
0	-21.7	-23.4	-20.3	-20.0	-19.4	-18.7	-18.7
1	-21.3	-21.1	-21.0	-20.7	-20.2	-20.0	-19.7
2	-20.0	-19.9	-19.9	-19.5	-19.7	-19.9	-19.1
3	-20.0	-20.1	-20.5	-20.7	-20.8	-21.0	-18.7
4	-21.3	-21.1	-21.0	-20.7	-20.2	-20.0	-18.9
5	-20.0	-19.9	-19.9	-19.5	-19.7	-19.9	-19.0
6	-20.0	-20.1	-20.5	-20.7	-20.8	-21.0	-19.1
7	-21.3	-21.1	-21.0	-20.7	-20.2	-20.0	-19.2
8	-20.0	-19.9	-19.9	-19.5	-19.7	-19.9	-19.3
9	-20.0	-19.9	-19.9	-19.5	-19.7	-19.9	-19.5
10	-20.0	-19.9	-19.9	-19.5	-19.7	-19.9	-19.7
11	-20.0	-19.9	-19.9	-19.5	-19.7	-19.9	-19.9
12	-20.0	-20.1	-20.5	-20.7	-20.8	-21.0	-20.0
13	-21.3	-21.1	-21.0	-20.7	-20.2	-20.0	-20.1
14	-20.0	-20.1	-20.5	-20.7	-20.8	-21.0	-19.9
15	-21.3	-21.1	-21.0	-20.7	-20.2	-20.0	-19.7
16	-20.0	-20.1	-20.5	-20.7	-20.8	-21.0	-19.1
17	-21.3	-21.1	-21.0	-20.7	-20.2	-20.0	-19.2
18	-20.0	-19.9	-19.9	-19.5	-19.7	-19.9	-19.3
19	-20.0	-19.9	-19.9	-19.5	-19.7	-19.9	-19.0
20	-20.0	-20.1	-20.5	-20.7	-20.8	-21.0	-19.7
21	-21.3	-21.1	-21.0	-20.7	-20.2	-20.0	-20.0
22	-20.0	-20.1	-20.5	-20.7	-20.8	-21.0	-20.5
23	-21.3	-21.1	-21.0	-20.7	-20.2	-20.0	-20.6

	0'	10'	20'	30'	40'	50'
0	----	----	----	----	----	*****
1	-21.3	-21.1	-21.0	-20.7	-20.2	-20.0
2	-20.0	-19.9	-19.9	-19.5	-19.7	-19.9
3	-20.0	-20.1	-20.5	-20.7	-20.8	-21.0
4	-21.3	-21.1	-21.0	-20.7	-20.2	-20.0
5	-20.0	-19.9	-19.9	-19.5	-19.7	-19.9
6	-20.0	-20.1	-20.5	-20.7	-20.8	-21.0
7	-21.3	-21.1	-21.0	-20.7	-20.2	-20.0
8	-20.0	-19.9	-19.9	-19.5	-19.7	-19.9
9	-20.0	-19.9	-19.9	-19.5	-19.7	-19.9
10	-20.0	-19.9	-19.9	-19.5	-19.7	-19.9
11	-20.0	-19.9	-19.9	-19.5	-19.7	-19.9
12	-20.0	-20.1	-20.5	-20.7	-20.8	-21.0
13	-21.3	-21.1	-21.0	-20.7	-20.2	-20.0
14	-20.0	-20.1	-20.5	-20.7	-20.8	-21.0
15	-21.3	-21.1	-21.0	-20.7	-20.2	-20.0
16	-20.0	-20.1	-20.5	-20.7	-20.8	-21.0
17	-21.3	-21.1	-21.0	-20.7	-20.2	-20.0
18	-20.0	-19.9	-19.9	-19.5	-19.7	-19.9
19	-20.0	-19.9	-19.9	-19.5	-19.7	-19.9
20	-20.0	-20.1	-20.5	-20.7	-20.8	-21.0
21	-21.3	-21.1	-21.0	-20.7	-20.2	-20.0
22	-20.0	-20.1	-20.5	-20.7	-20.8	-21.0
23	-21.3	-21.1	-21.0	-20.7	-20.2	-20.0



 **PlantWatch**



```
25/07/2000 13:58      1: Banco BT 1      Alarm enabled
25/07/2000 13:59 <-> PW: Fine carta
25/07/2000 14:00 <!> PW: Fine carta
25/07/2000 14:00 PW: Alarm rele ON
25/07/2000 14:52 PW: Acceso
25/07/2000 14:52 <!> PW: Fine carta
25/07/2000 14:52 PW: Alarm rele ON
25/07/2000 14:53      1: Banco BT 1      Alarm disabled
25/07/2000 14:55      9:                Alarm enabled
25/07/2000 14:55      25:               Alarm enabled
25/07/2000 14:55      26:               Alarm enabled
25/07/2000 14:55      27:               Alarm enabled
25/07/2000 14:55      28:               Alarm enabled
25/07/2000 14:55      29:               Alarm enabled
25/07/2000 14:55      30:               Alarm enabled
25/07/2000 14:55      31:               Alarm enabled
25/07/2000 14:55      32:               Alarm enabled
25/07/2000 14:56      1: Banco BT 1      Alarm enabled
25/07/2000 15:13      2: Murale Verdura 1 Alarm disabled
25/07/2000 15:13 <-> PW: Fine carta
25/07/2000 15:16      2: Murale Verdura 1 Alarm enabled
25/07/2000 15:16 <!> PW: Fine carta
25/07/2000 15:16 PW: Alarm rele ON
25/07/2000 16:05 PW: Acceso
25/07/2000 16:05 <!> PW: Fine carta
25/07/2000 16:06 PW: Alarm rele ON
25/07/2000 17:43      1: Banco BT 1      Alarm disabled
25/07/2000 17:44      1: Banco BT 1      Alarm enabled
25/07/2000 17:47 PW: Acceso
25/07/2000 17:48 <!> PW: Fine carta
25/07/2000 17:48 PW: Alarm rele ON
25/07/2000 17:48 <-> PW: Fine carta
25/07/2000 17:50 PW: Acceso
25/07/2000 17:52 <!> PW: Fine carta
25/07/2000 17:52 PW: Alarm rele ON
25/07/2000 18:11 PW: Acceso
25/07/2000 18:11 <!> PW: Fine carta
25/07/2000 18:12 <-> PW: Fine carta
25/07/2000 18:13 PW: Acceso
25/07/2000 18:14 <!> PW: Fine carta
25/07/2000 18:14 PW: Alarm rele ON
26/07/2000 9:28 PW: Acceso
26/07/2000 9:28 <!>      1: Banco BT 1      Slave fuori linea
26/07/2000 9:28 <!>      2: Murale Verdura 1 Slave fuori linea
26/07/2000 9:28 PW: Alarm rele ON
26/07/2000 9:28 <->      1: Banco BT 1      Slave fuori linea
26/07/2000 9:28 <->      2: Murale Verdura 1 Slave fuori linea
26/07/2000 9:30 PW: Acceso
26/07/2000 9:30 <!> PW: Fine carta
26/07/2000 9:30 <-> PW: Fine carta
26/07/2000 9:32 <!> PW: Fine carta
26/07/2000 9:32 PW: Alarm rele ON
26/07/2000 9:33 <-> PW: Fine carta
26/07/2000 9:33 <!> PW: Fine carta
26/07/2000 9:34 PW: Alarm rele ON
26/07/2000 9:34 <-> PW: Fine carta
26/07/2000 9:44 <!> PW: Fine carta
26/07/2000 9:44 PW: Alarm rele ON
26/07/2000 10:35 PW: Acceso
26/07/2000 11:13 PW: Acceso
26/07/2000 11:36 PW: Acceso
26/07/2000 13:54 <!> PW: Printer module offline
26/07/2000 13:54 PW: Alarm rele ON
26/07/2000 14:45 <-> PW: Printer module offline
26/07/2000 14:45 <!> PW: Fine carta
26/07/2000 14:45 PW: Alarm rele ON
```

ALARMS printout

Detailed Alarm printout :

On line (Real time)
timed or
upon request



PLANTWATCH FAX → Date/time: 11/09/2000 12:07
From: PW history Id: 1
To: 5

Report allarmi

11/09/2000 12:04<†>	<*) 3	5: Isola BT 1	Unita' fuori linea
11/09/2000 12:04<†>	<*) 3	4: Banco BT 3	Unita' fuori linea
11/09/2000 12:03<†>	<*) 3	3: Banco BT 2	Unita' fuori linea
11/09/2000 12:03<†>	<*) 3	2: Banco BT 1	Unita' fuori linea
11/09/2000 12:03<†>	<*) 4	1: Condizio.Pollanel	Unita' fuori linea
11/09/2000 12:03<†>	<*) 4	7: Banco BT 1	Unita' fuori linea
11/09/2000 12:03<†>	<*) 4	6: Murale BT 1	Unita' fuori linea
11/09/2000 12:02	PW: Accensione		
11/09/2000 11:56<†>		7: Banco BT 1	Unita' fuori linea
11/09/2000 11:56<†>		6: Murale BT 1	Unita' fuori linea
11/09/2000 11:56<†>		5: Isola BT 1	Unita' fuori linea
11/09/2000 11:56<†>		4: Banco BT 3	Unita' fuori linea
11/09/2000 11:56<†>		3: Banco BT 2	Unita' fuori linea
11/09/2000 11:56<†>		2: Banco BT 1	Unita' fuori linea
11/09/2000 11:56<†>		1: Condizio.Pollanel	Unita' fuori linea
11/09/2000 11:56	PW: Accensione		
11/09/2000 11:30<†>		5: Isola BT 1	Unita' fuori linea
11/09/2000 11:30<†>		4: Banco BT 3	Unita' fuori linea
11/09/2000 11:29<†>		3: Banco BT 2	Unita' fuori linea
11/09/2000 11:29<†>		2: Banco BT 1	Unita' fuori linea
11/09/2000 11:29<†>		1: Condizio.Pollanel	Unita' fuori linea
11/09/2000 11:29<†>		7: Banco BT 1	Unita' fuori linea
11/09/2000 11:29<†>		6: Murale BT 1	Unita' fuori linea
11/09/2000 11:27	PW: Accensione		
11/09/2000 11:26	PW: Interf. stamp. offline		
11/09/2000 11:24	PW: Interf. stamp. offline		
11/09/2000 11:24	PW: Accensione		
11/09/2000 11:17	PW: Interf. stamp. offline		
11/09/2000 11:17	PW: Accensione		
11/09/2000 11:16	PW: Interf. stamp. offline		
11/09/2000 11:16	PW: Accensione		

<†>=Allarmi attivi <*)=Allarmi gravi, durata (min)

Report valori correnti

1	Condizio.Pollanel	Temp.Ing.Evap. o Tem: (27.0)	Unita' fuori linea
1	Condizio.Pollanel	Temp.Uscita Evaporat: (28.6)	Unita' fuori linea
2	Banco BT 1	Regolazione: (27.2)	Unita' fuori linea
2	Banco BT 1	Sbrinamento: (28.4)	Unita' fuori linea
3	Banco BT 2	Regolazione: (27.5)	Unita' fuori linea
3	Banco BT 2	Sbrinamento: (28.3)	Unita' fuori linea
4	Banco BT 3	Regolazione: (28.9)	Unita' fuori linea
4	Banco BT 3	Sbrinamento: (28.7)	Unita' fuori linea
5	Isola BT 1	Regolazione: (27.7)	Unita' fuori linea
5	Isola BT 1	Sbrinamento: (0.0)	Unita' fuori linea
6	Murale BT 1	Regolazione: (28.4)	Unita' fuori linea
6	Murale BT 1	Sbrinamento: (0.0)	Unita' fuori linea
7	Banco BT 1	Temperatura ambiente: (29.4)	Unita' fuori linea
7	Banco BT 1	Temperatura evaporat: (28.2)	Unita' fuori linea

FAX of the Alarms

With internal or external MODEM

FAX call management (all numbers / first sent)

Total “picture” of plant status : Only 1 FAX even with many alarms



PlantWatch manager v.2.1 'C:\Programmi\Carel\PWSetup\PWatch.ini'

File Setup PW-configuration Actions Help

Save configuration Communication Main configuration Upload Download Get History

Network configuration:

- 1) Ir32 Universal
- 2) Ir32 Refrigeration
- 3) MPX
- 4) MPX Slave
- 5) Plug-In
- 6) Microchiller 1 Compr
- 7) Microchiller 2 Compr
- 8) Mch Compact

Configuration template for selected instrument: Show Hist. statistics

1) Ir32 Universal

Unit description/category: 0 - Showcase Disable alarms

0 - -LT Disable offline alarm

Unit progressive: 1

1 2 3 4 5 6 7 8 9 10 11 12 13 14 15 16 17

Instrument type: Ir32 universal

Template description: Ir32 Universal Import Export

History Alarms

Variable name	Description	Recording t...	Recording ...
● ING_SONDA_0	Probe 1	LF	Istantaneous
● ING_SONDA_1	Probe 2	LF	Istantaneous
● STATQ_UD_1	Relay 1 status	LF	Istantaneous

Tapi initialized.■



PlantVisor Enhanced



PlantVisor is a **range** of supervisory software designed for all kind of applications



PlantVisor, main features:

- Web server based
- Html pages
- Internet Explorer is the user interface
- **TCP/IP protocol**
- LAN access to the server
- Compatible with: **Win2000, WinXP.**
- PlantVisor can be published on Internet



PlantVisor, main features:

- Multi-user access with passwords
- Software Protection by:
 - USB key for **Remote version**
 - New RS485 converter for **Local version**
- All the controllers for refrigeration and HVAC are included
- Historical files guaranteed for more than one year
- Compatible with PlantWatch

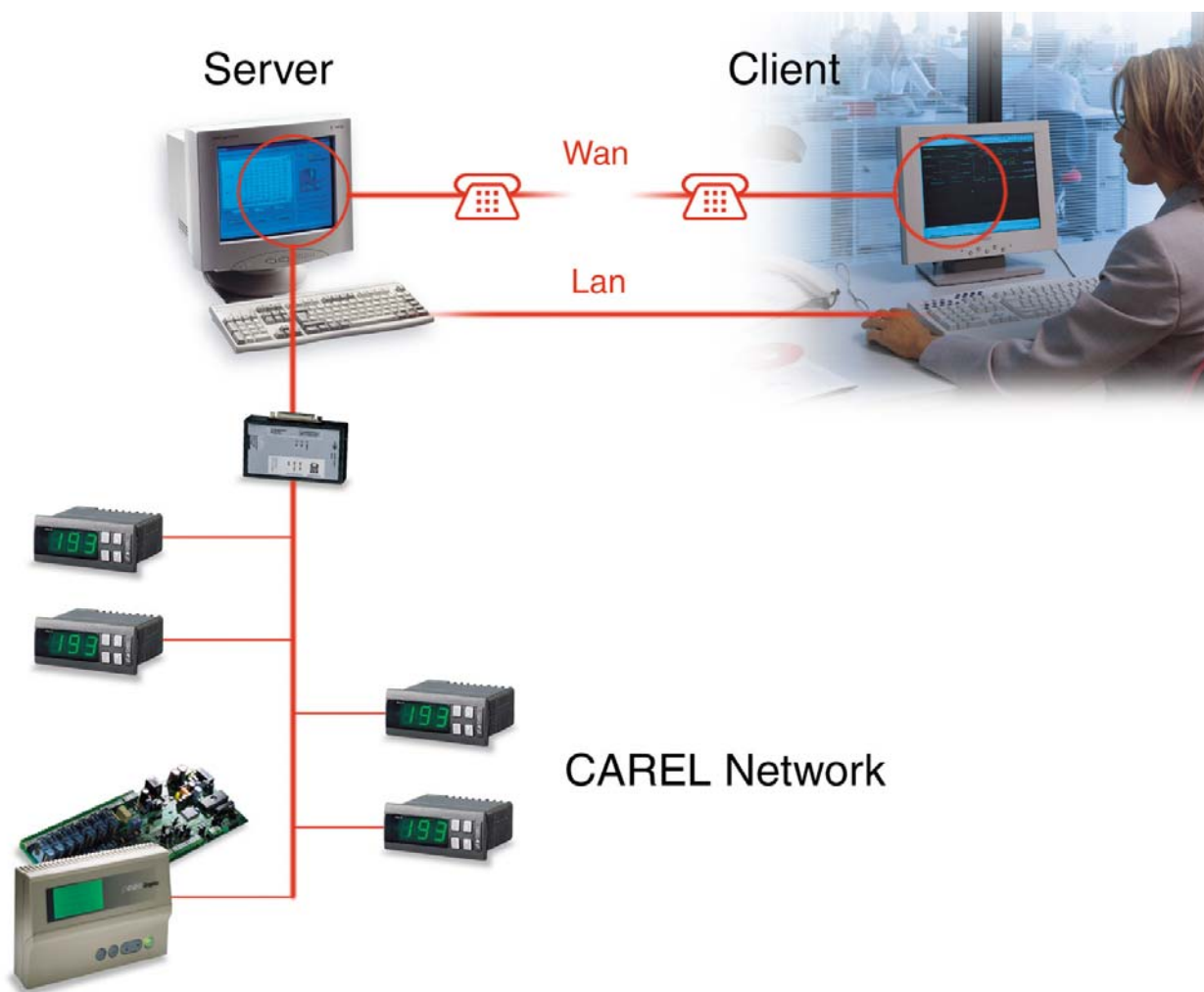


Local PlantVisor

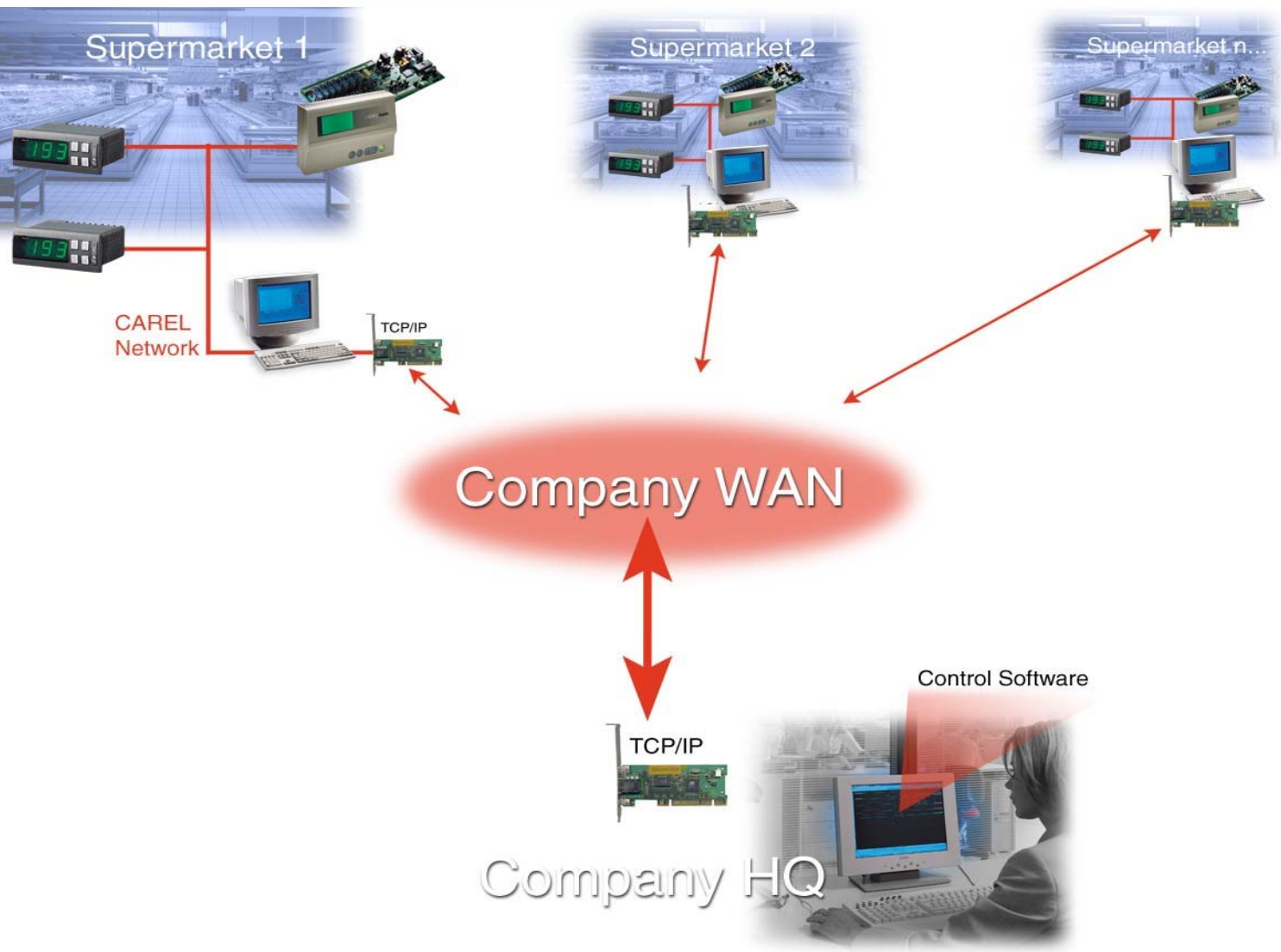
Remote PlantVisor



PlantVisor network architecture:



Point to point
control on
company network
TCP/IP or modem



Supermarket
centralised
control
through
company
network
TCP/IP
(INTRANET)



PlantVisor, main function:

- Read / Write of the parameters
- Remote Defrost command
- Alarms management (scheduler) by: Fax, SMS, relay, remote PC dial, soon: e-mail (via LAN)
- Automatic and manual temperatures printout
- Data backup
- Alarms routing from local PC to remote PC
- Logged data and alarms transfer from PlantWatch to remote PlantVisor
- GSM modem management



PlantVisor Enhanced

System requirement for server software:

- PC Pentium III
- USB port
- 64MB Memory
- 1GB HD
- Internet Explorer 5.0
- Modem (optional)
- SVGA monitor 800x600 at least
- 10Mbit Ethernet card for LAN (optional)



PlantVisor Enhanced

Compatibility:

All RS485 controllers including:

- MasterCase
- PowerSplit
- New MasterCella
- MasterCella Split
- pCO, pCO2 and pCO1
- I/O module
- small controllers for refrigeration
- Driver for EXV
-



PC-Gate

PC-Gate is the innovative RS232/485 serial converter.

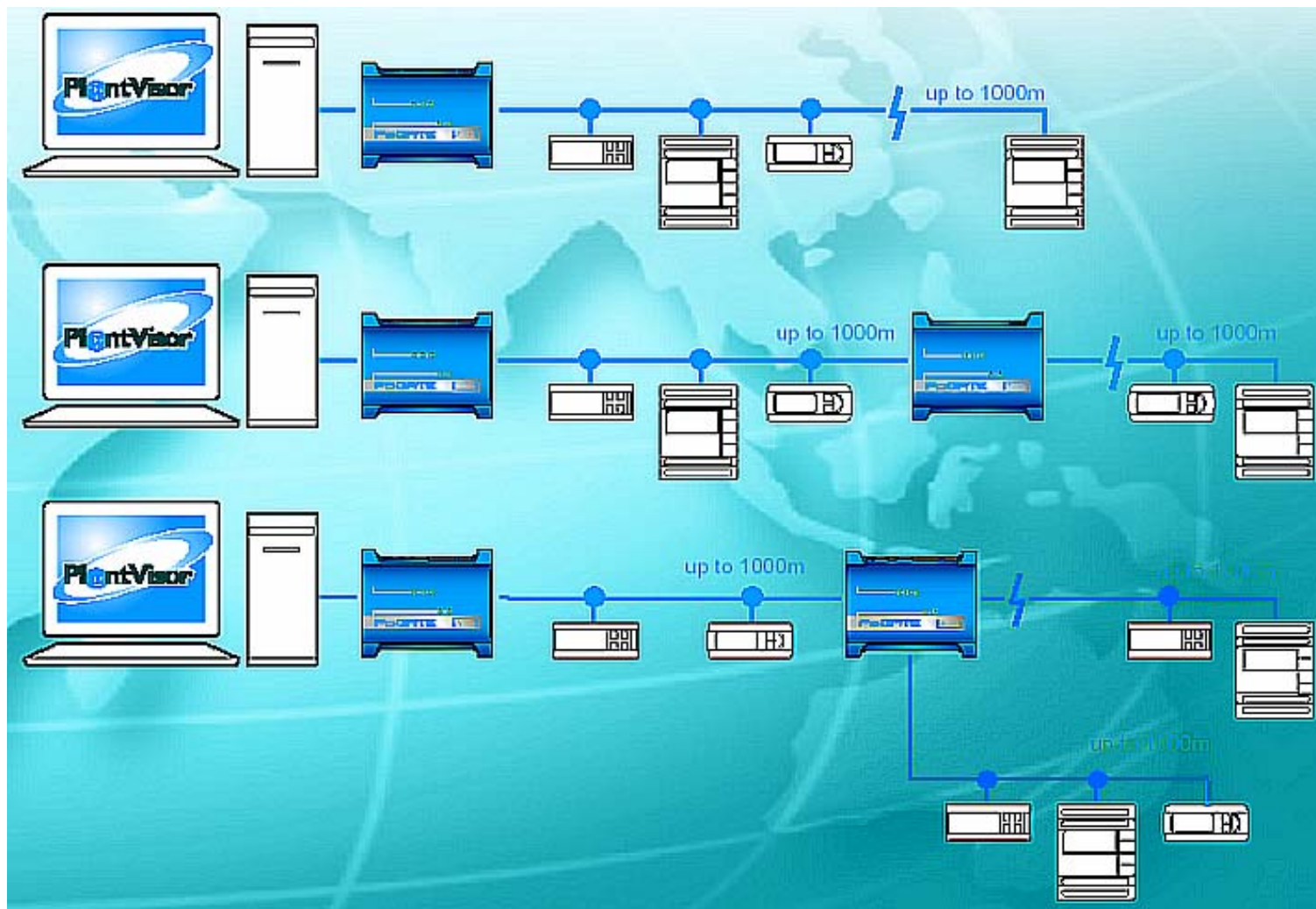
- Serial conversion maximum 200 peripherals
- Watchdog for communication with the computer
- RS485 line amplifier/branch: the one input and the two output ports can be used to extend the line over the standard 1000 metres and/or to add branches.
- The converter can be installed on the desktop or mounted on a DIN rail.
- There are two models of converter:
 - one with internal key to enable the operation of PlantVisor Enhanced;
 - the other without internal key for use as a converter – branch only.

This is the model supported by the PlantVisor Free Edition.





How to use PC-Gate





from **MasterPlant** to **PlantVisor Enhanced**

Minimum system requirement (suggested):

- PC Pentium III (IV)
- Windows 98/XP/2000 (2000)
- 64MB Memory (256MB)
- 1GB HD
- **USB port**
- Internet Explorer 5.0 (6.0)
- SVGA monitor 800x600 at least
- Modem (optional)
- 10Mbit Ethernet card for LAN (optional)



from **MasterPlant** to **PlantVisor Enhanced**

Special offer for the upgrading:

- **PlantVisor Enhanced for 100€ (net price)**
- Cod. PVUPGMBL00 for local PC
- Cod. PVUPGMBR00 for remote PC

The kits include: CD Rom PlantVisor Enhanced + USB key.

The local kit doesn't includes the converter because we presume already installed in the plant.

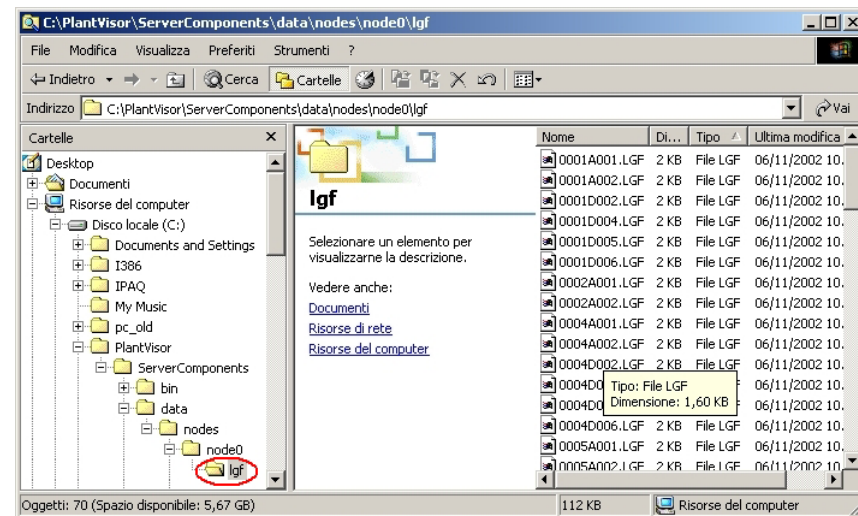
Availability: March 2003



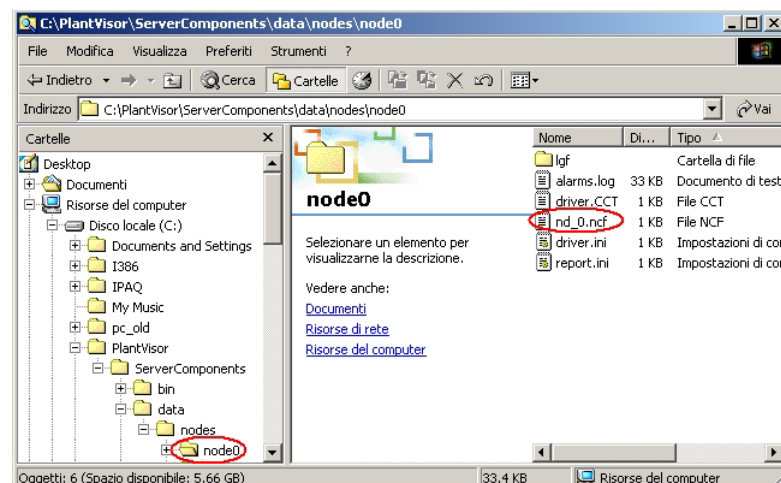
from MasterPlant to PlantVisor Enhanced

How to do:

- Install PlantVisor
- Copy the LGF files from MasterPlant into the PlantVisor **lgf** folder:



- Copy the NCF file from MasterPlant into the PlantVisor **node0** folder:





from MasterPlant to PlantVisor Enhanced

Continue with the configuration

Carel Supervisor

General Line 1 Line 2 Line 3 Line 4 Line 5 Line 6

Configuration of devices

In this section, you can configure the devices connected to your line, the COM port where the line is connected and the line protocol type.
To add devices, select the serial address (or the serial address range if you want to add more than one device of the same type) and define the type of the device connected.
To remove a device from the list, select the address (or address range) and select the ----- type.

Serial configuration

COM1* 19200* RS485* *Default value

Configuration of devices

Serial Address	Device Type	Device Description	Disabled
1	IR32 M S Y X C for refrigeration	unit1	<input type="checkbox"/>
2	IR32 V W Z Universal 2 NTC probes	unit2	<input type="checkbox"/>
3	I/O Module	mio #3	<input type="checkbox"/>
4	MasterCella	mcella #4	<input type="checkbox"/>

User: Administrator

Updated. Intranet locale



PlantVisor Enhanced Codes

Product	Code	Price €
PlantVisor Enhanced Includes the USB key + RS485 converter	PV STD E BL 00	1300
PlantVisor Enhanced Remote Includes the USB key	PV STD E BR 00	900
PlantVisor Upgrade Local Includes the USB key	PV UPG M BL 00	100 net p.
PlantVisor Upgrade Remote Includes the USB key	PV UPG M BR 00	100 net p.
Service Pack 1 CD - Demo CD PlantVisor Remote Enhanced free version	PVSTDMBLD0	25



PC-Gate Codes

Product	Code	Price €
USB Key for custom applications local and remote. Includes tools for the key programming	PVKEYMBLK0	600
RS485 converter with key function unlimited units only for Custom application. Includes tools for the key programming	CVKEY00000 from May 2003	600
RS485 converter No key function	CVSTD00000 from May 2003	200
Service Pack 1 CD PlantVisor Remote Enhanced free version Demo CD	PVSTDMBLD0	25



PlantVisor box



The box includes:

- CD ROM with software and manuals
- The RS232/485 converter (local only)
- Leaflet for a quick start-up
- Protection key (remote only)
- Mouse pad
- Stickers for the PC



www.carel.com